

halo
assist

Installation supportline:

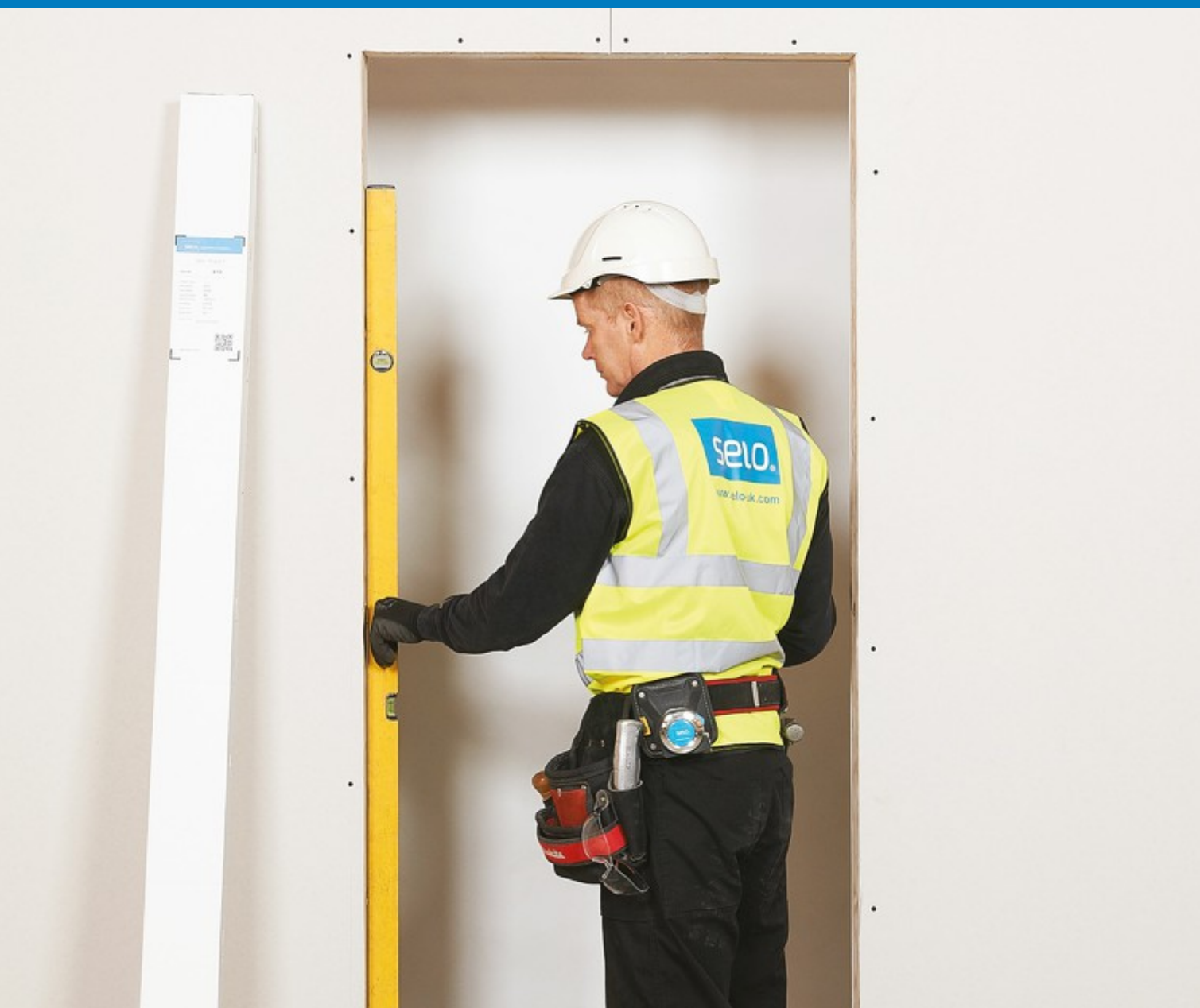
call 020 3880 0339

selo.

Concealed Frame Doorsets
Riser Doors & AOVs

Arriva

Concealed frame doorsets



1

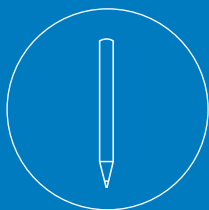
2

Wall construction preparation guide

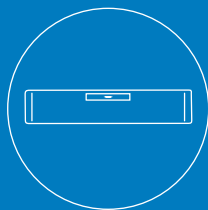
Thank you for choosing Arriva

To ensure the installation process is simple and efficient we recommended you read this guide in full before you begin.

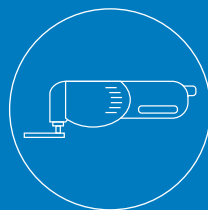
Tools required



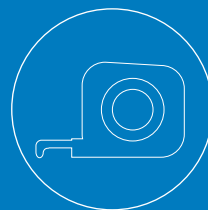
Pencil



Spirit level



Multitool



Tape measure

IMPORTANT - Fire rating notice

The fire rating of any doorset is subject to a number of factors, including:



1. The design/workmanship of other work, in particular the partitions into which the doorset is fixed.)
2. The doorset being installed in accordance with the installation instructions.

The Arriva system can be fitted to either studwork or masonry walls, you will need to ensure the wall itself meets the correct fire resistance performance.

Please consult Selo for advice and guidance to ensure the fire performance is met.

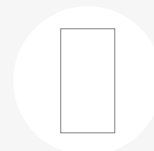
tel 020 3880 0339 **email** sales@selo-uk.com

Wall construction preparation

The Arriva system is suited for use on studwork partitions of either steel or timber.

Structural opening calculations

From **known door dimensions** you can calculate the required **studwork width and height**.



DOOR

Width (Single)

Width (Double)

Height



STUDWORK

=Width

=Width

=Height

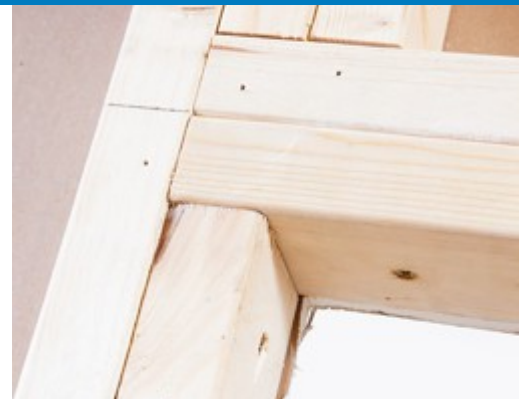
(Inc. 5mm undercut)

Masonry wall construction

If Arriva is being used on a masonry wall then a timber stud is required within the opening. Once this has been fitted, the wall can be clad with plasterboard using the dot & dab method by fixing the plasterboard to the wall with drywall adhesive. This allows the Arriva frame to be installed in the standard way.

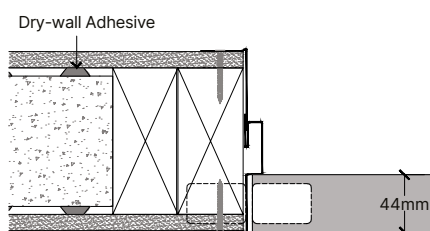
IMPORTANT - When using an overhead concealed closer

If an overhead concealed closer is being used then a double stud is required at the head. Ensure the lower stud is timber to allow the closer channel to be installed easily.



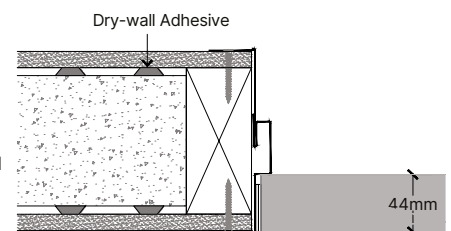
Dot & Dabbed Wall 1:

- Double timber stud
- Single skin plasterboard
- Concealed hinge



Dot & Dabbed Wall 2:

- Single timber stud
- Single skin plasterboard
- Butt hinge

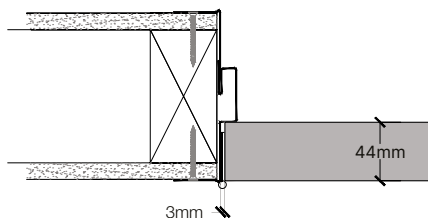


The illustrations above are **NON FIRE RATED** - Please consult a wall designer for fire rated details

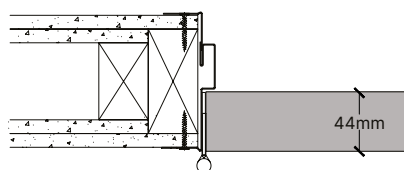
Butt hinges

Timber stud partitioning

- Single stud
- Single skin plasterboard
- Butt hinge

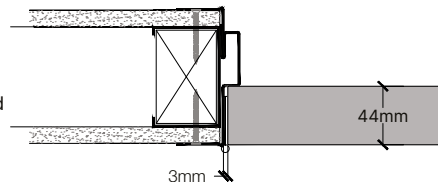


- Single stud
- Double skin plasterboard
- Butt hinge

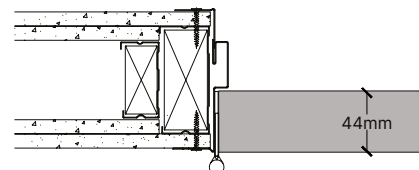


Steel stud partitioning

- Single stud
- Timber stud insert
- Single skin plasterboard
- Butt hinge



- Single stud
- Timber stud insert
- Double skin plasterboard
- Butt hinge



IMPORTANT

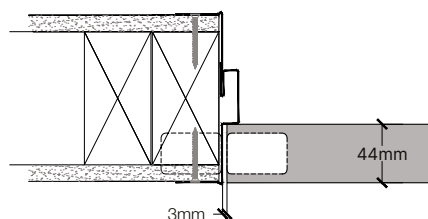
When using a steel stud a timber insert must be used.

The illustrations above are NON FIRE RATED - Please consult a wall designer for fire rated details

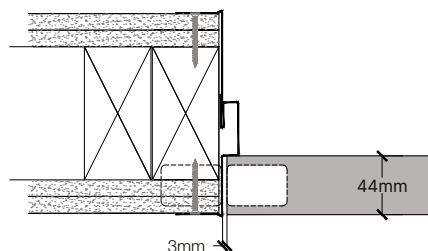
Concealed hinges

Timber stud partitioning

- Double stud
- Single skin plasterboard
- Concealed hinge

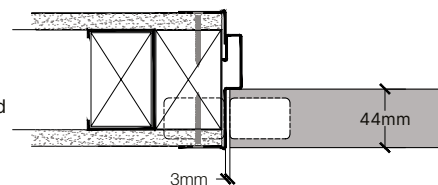


- Double stud
- Double skin plasterboard
- Concealed hinge

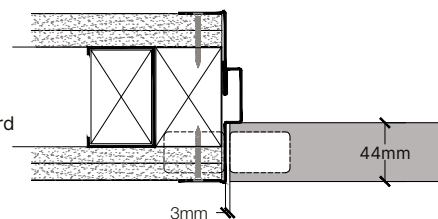


Steel stud partitioning

- Double stud
- Timber stud inserts
- Single skin plasterboard
- Concealed hinge



- Double stud
- Timber stud inserts
- Double skin plasterboard
- Concealed hinge



IMPORTANT

If using a steel stud then a timber insert must be used.

The illustrations above are NON FIRE RATED - Please consult a wall designer for fire rated details

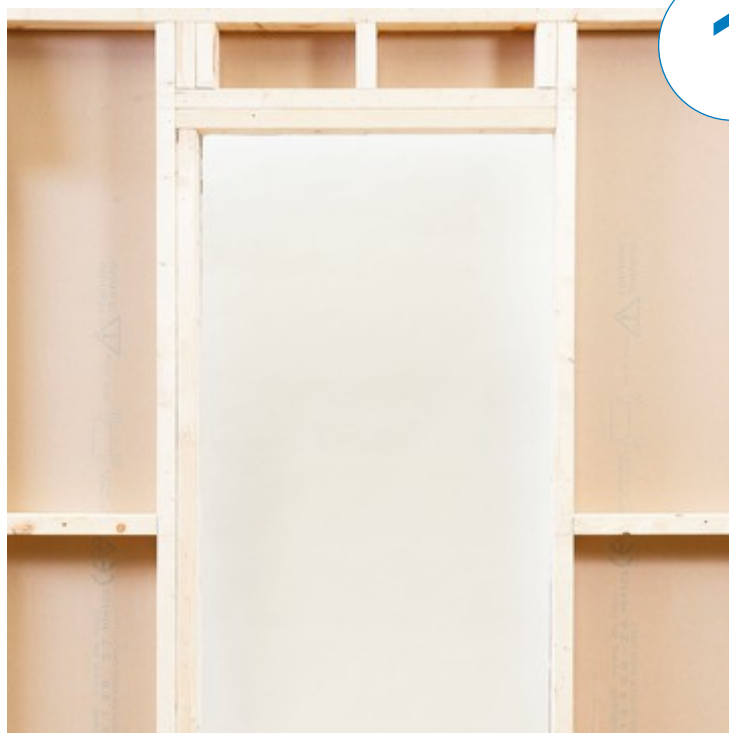
Butt Hinges

Simple and quick to install, the butt hinges are surface mounted and supplied with self drilling screws.



1

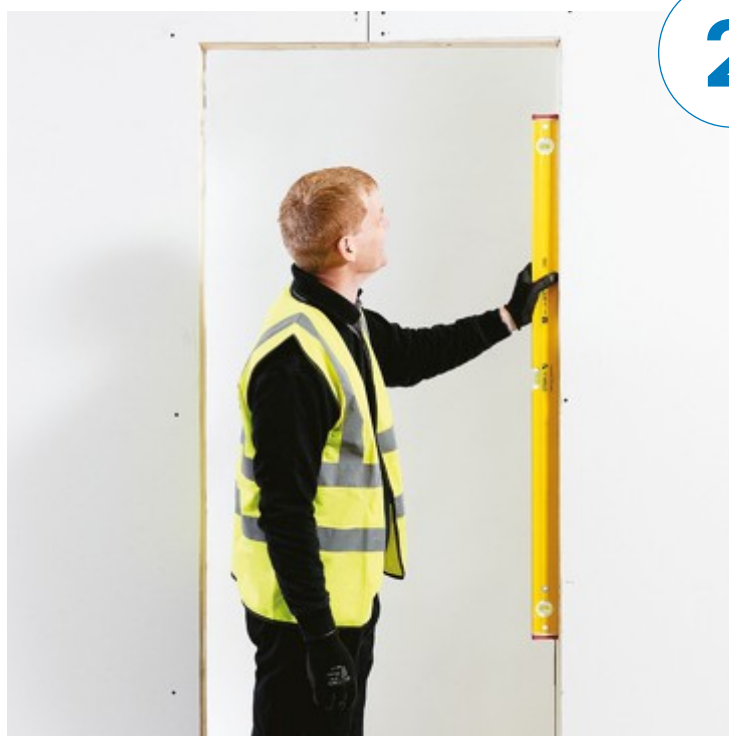
Stud construction



Construct your stud partition in the standard way. If using steel stud then a timber insert is required within the stud of at least 45mm depth.

2

Level-up and plasterboard



When forming the actual opening, ensure you are working to the correct structural opening size provided on the Selo door schedule.

Ensure the opening is square and level and that the wall is plumb.

IMPORTANT

The joint in the plasterboard must not be in line with the jambs, but must meet centrally over the opening as shown.

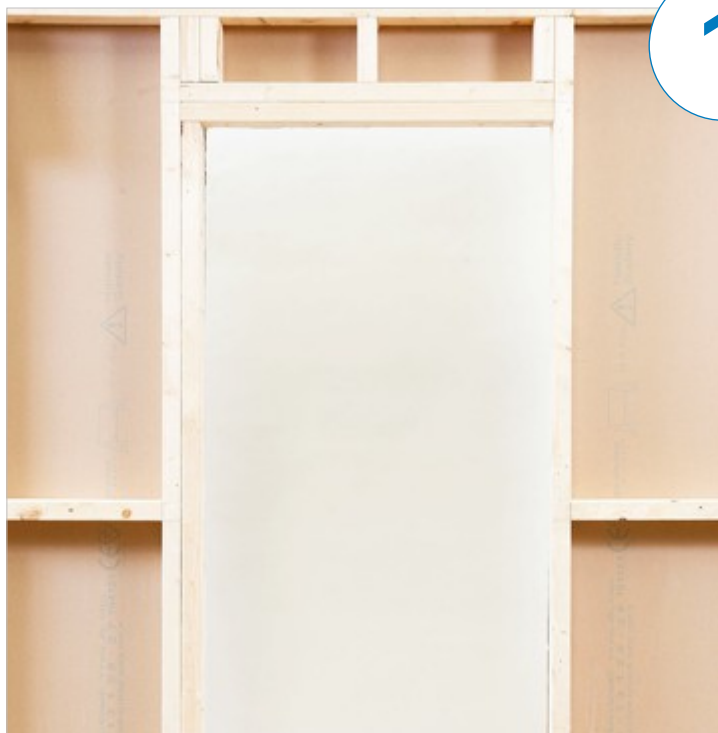
Concealed Hinges

These instructions apply to the installation of the Tectus, RY45 and RY80 hinge systems.



1

Stud construction



Construct your stud partition with a double stud on the hinge side. This is to provide extra strength due to the notching required for the Concealed hinges.

2

Level-up and plasterboard



When forming the actual opening, ensure you are working to the correct structural opening size provided on the Selo door schedule.

Ensure the opening is square and level and that the wall is plumb.

IMPORTANT

When using a partition made from steel studs, ensure that the final stud is a timber stud. This will make the notching process for the concealed hinges a vastly simpler process.

3**Offer up**

Offer the hinge jamb up to the stud and mark a line at the top of the hinge in all the hinge brackets.

4**Mark**

Using the notch template, line the slot in the template up with the lines you have made on the stud and draw around the template. This gives you the exact size of the notch required.

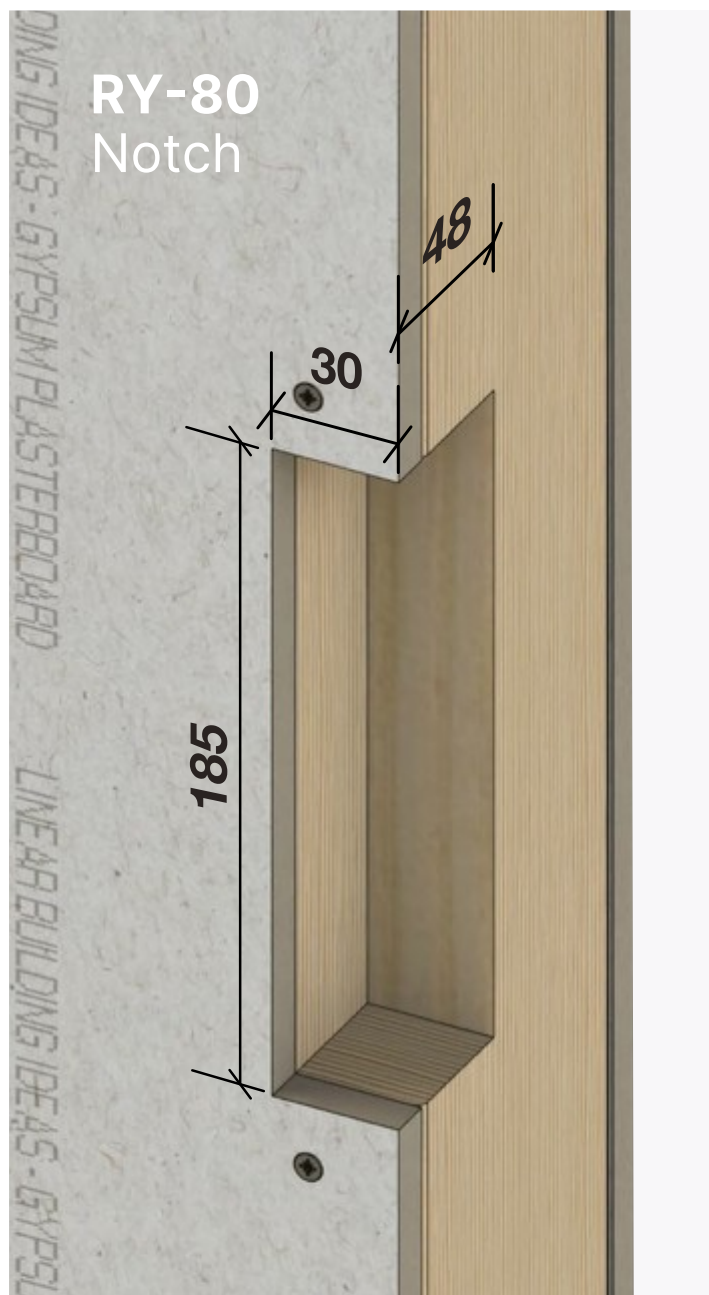
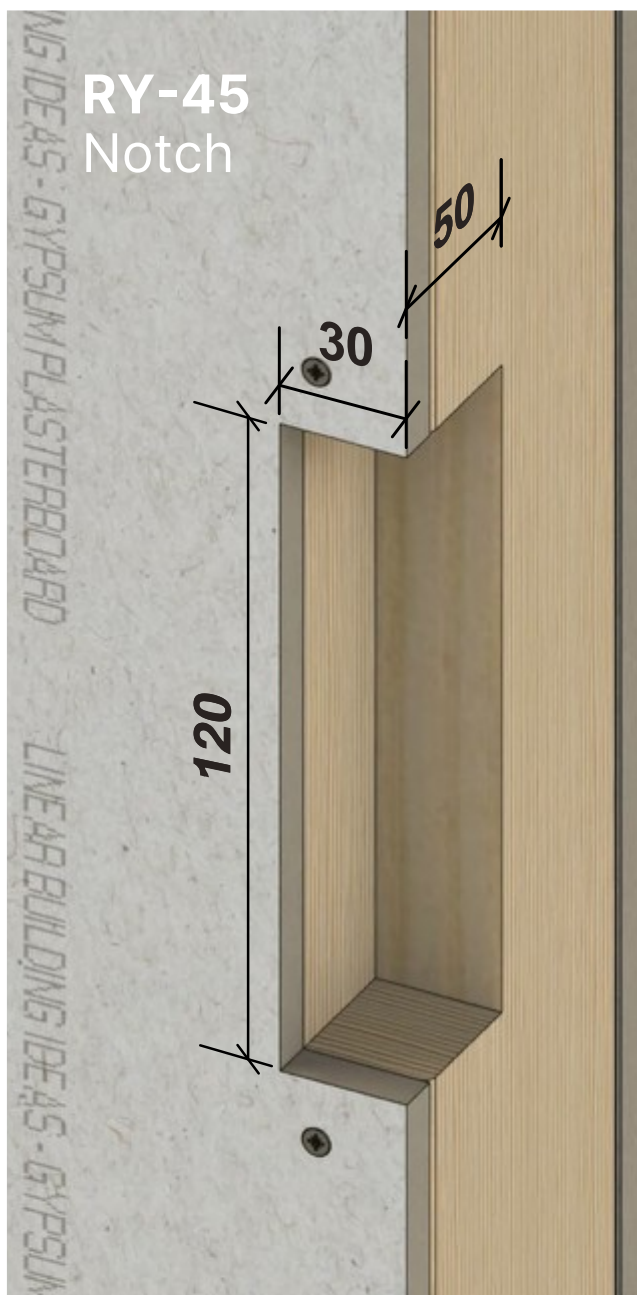
5

Notch partition for hinges



The hinge stud needs to be notched to accommodate each bracket and hinge.

Use the correct measurements as shown below.



Congratulations

You have now constructed your opening and are ready to install your Arriva doorset.

Please refer to the Arriva installation instructions to complete the application.

selo.global/resources





For installation help and advice with your project:

call 020 3880 0339 / **email** sales@selo-uk.com

INSTALLER TRAINING

Hands-on practical installation advice

Complimentary training is provided at our Milton Keynes headquarters. Learn installation tips and tricks directly from the manufacturer; helping improve standards with quality, compliant installations.



Scan QR for Video Library
www.selo.global/video-library/

For **help and advice** with any Selo product, call the support team on:
020 3880 0339



selo®

call 020 3880 0339
email sales@selo-uk.com
www.selo.global

Selo
K2 Kents Hill Business Park Timbold Drive
Milton Keynes MK7 6BZ



Follow us on:

