

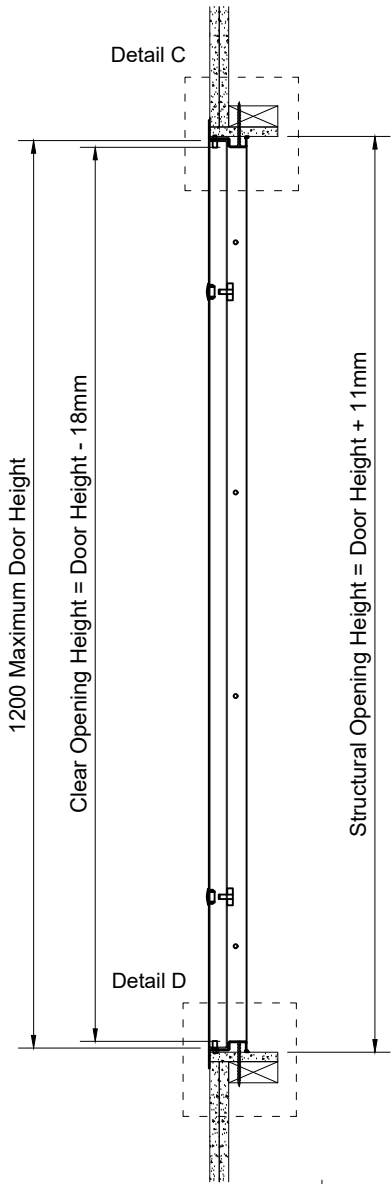
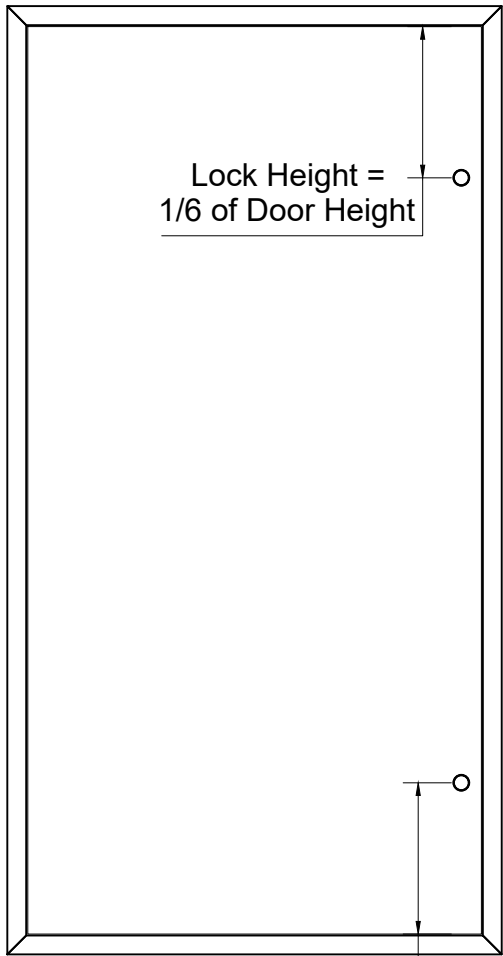
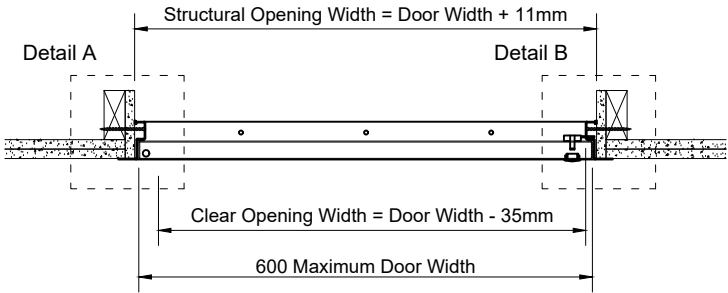
Drawing is provided to customers free of charge and the details shown are subject to the accuracy of the information provided to SELO at the time the drawing was originally requested. No duty of care is owed to the recipient or any other third party and SELO cannot accept liability in respect to the details shown.
The drawing should therefore be approved by the project design and management authority before use to ensure it meets with their specific requirements. It should also be read in conjunction with SELO's current literature available at www.selo-uk.com

SEL-FRM-00098 Rev 1

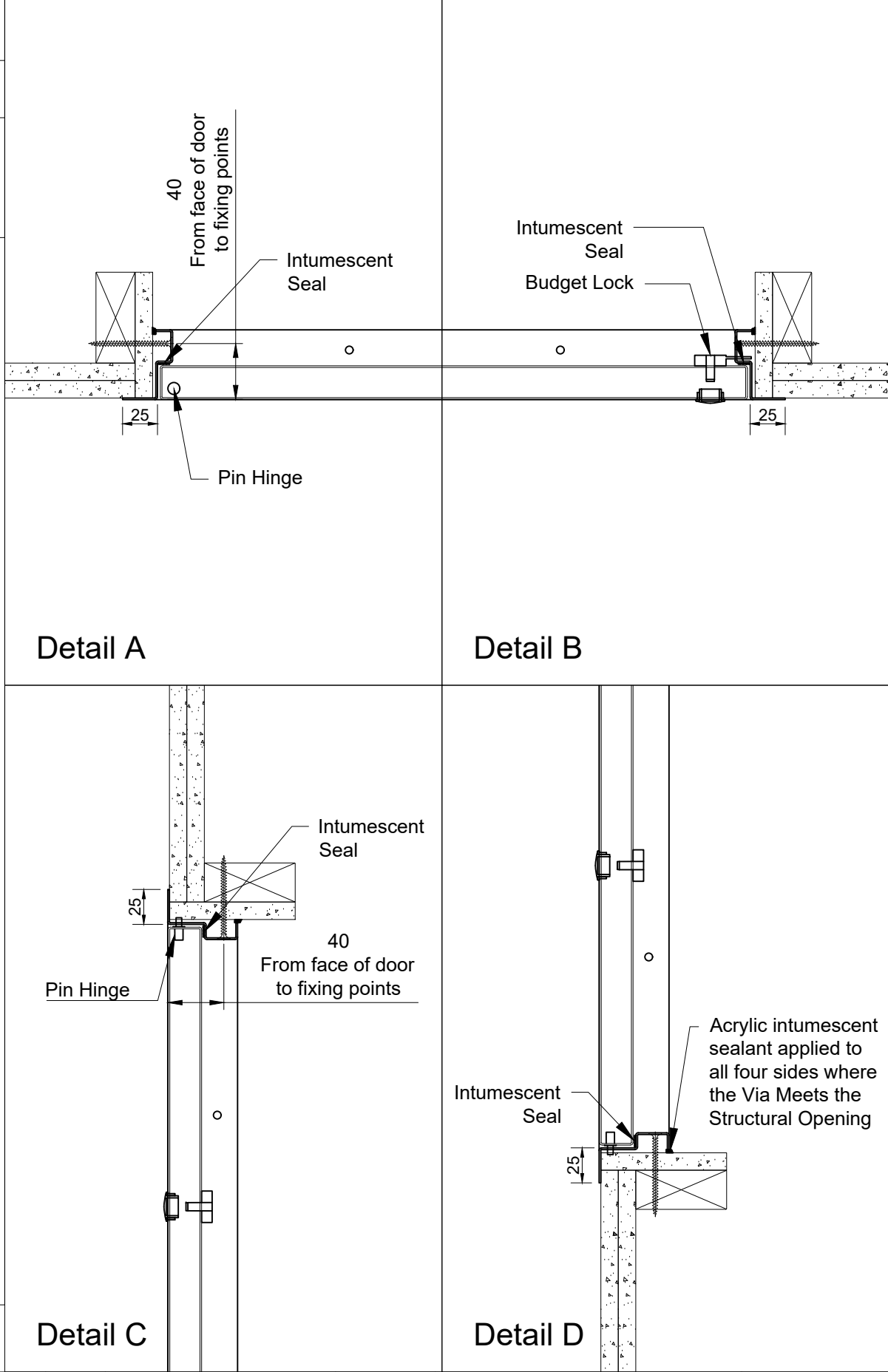
Ceiling details shown for information only, not for construction issue

Please note:
Ceiling build up to be certified by others.

Door available within the following sizes:
150 to 600mm Wide & 601 to 1200mm high.



FIRE RATING	E60
FIRE STOPPING	Acrylic Intumescent Sealant
ACOUSTIC RATING	N/A
Results declared reflect the optimum achievable within the limitations of the test standard and sites specific average results may vary where building elements of different materials interface altering natural acoustic deflection.	



Selo are not the designers responsible for any supporting construction if shown, you should know that we are not aware of any fire test evidence for supporting constructions which are not, standard as defined in EN1363-1:2020, nor is it our responsibility to establish if such evidence exists. Tested detail in accordance with EN1634-1, requires standard supporting constructions with a minimum of 200mm around the panel frame. Flexible construction requirement is a minimum of 300mm between apertures. Outside of these minimum dimensions specific fire test evidence should be sought. All requirements of the Fire resistance field of application report from Warringtonfire, for the Selo product/s included in this drawing must be ensured, or an alternative fire assessment for any deviation including non-standard construction details must be sought from a competent and designated body for producing fire resistance assessments.

FOR FURTHER TECHNICAL DETAIL AND INFORMATION PLEASE
CONTACT THE SALES TEAM AT sales@selo-uk.com

				Remove all burrs and sharp edges.		PROJECT:	VIA ACCESS PANELS		TOLERANCES IN mm UNLESS OTHERWISE NOTED X ± 1 X.X ±0.5 ANGULAR ±0.5 DEG
				Please report errors and omissions		INT DWG NO:	SEL-DRW-PRD-VIA-0226		
				FACE:	Metal		EXT DWG NO:	SEL-DRW-PRD-VIA-2509	
C	Dimensions Updated	CK	16/01/25		NAME	DATE	PANEL TYPE:	5 C	DO NOT SCALE PRINT MILLIMETERS REV. C
B	Lock name updated, Fire rated constructions caveat added.	CK	03/08/23	DRAWN:	CK	28/07/23	DESCRIPTION:	VIA Metal E60 Single Door for Ceilings - Visible, 2x Budget Lock	
A	Initial issue	CK	28/07/23	CHECKED:					
REV:	COMMENT:	REVISED BY:	DATE:	APPROVED:			SCALE: 1:10 / 4 @ A3 SHEET: 2 OF 2		