

SEL-FRM-00098 Rev 1

Ceiling details shown for information only, not for construction issue

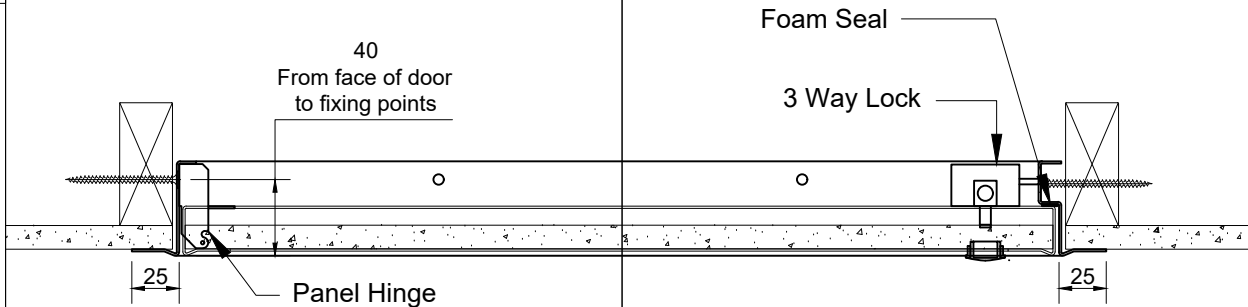
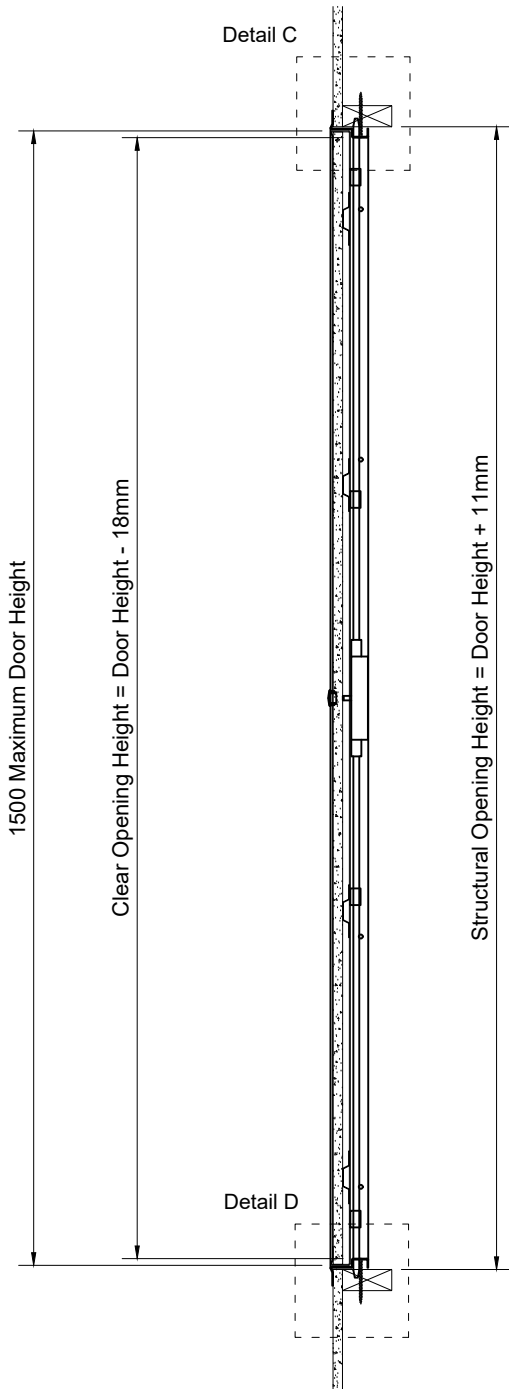
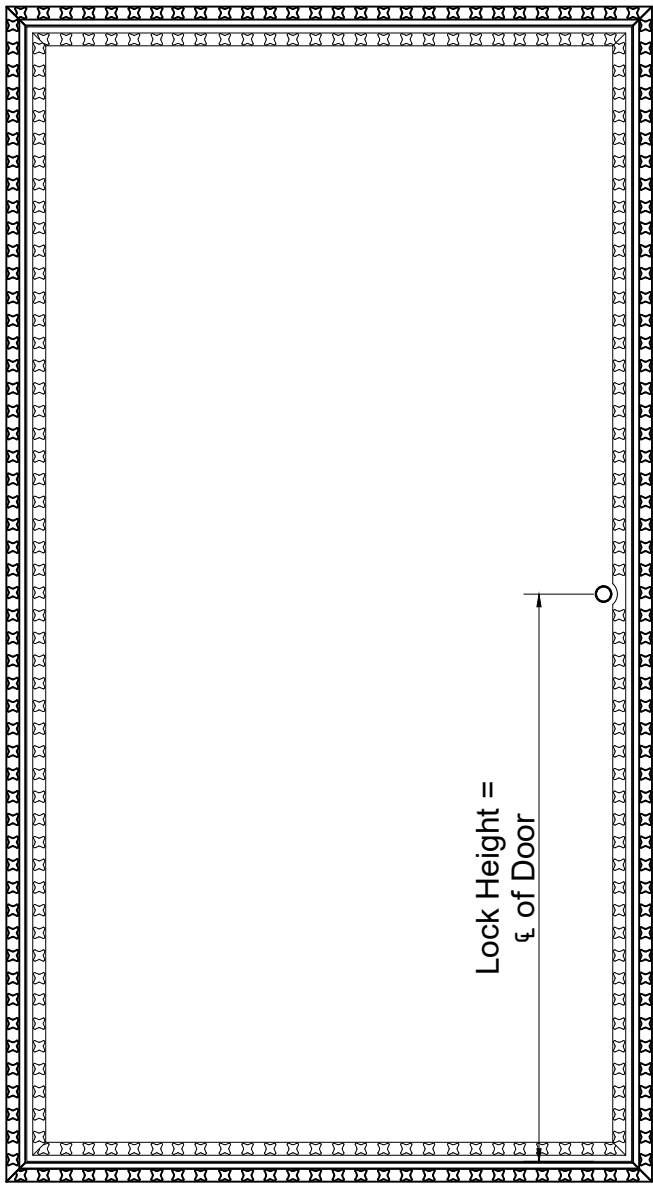
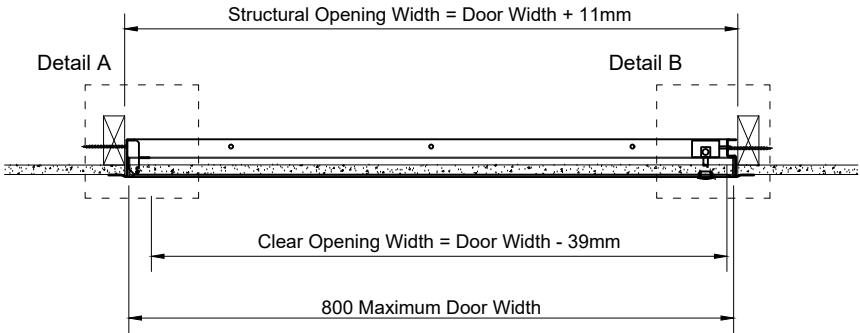
Please note:  
Ceiling build up to be certified by others.

FIRE RATING NFR

FIRE STOPPING N/A

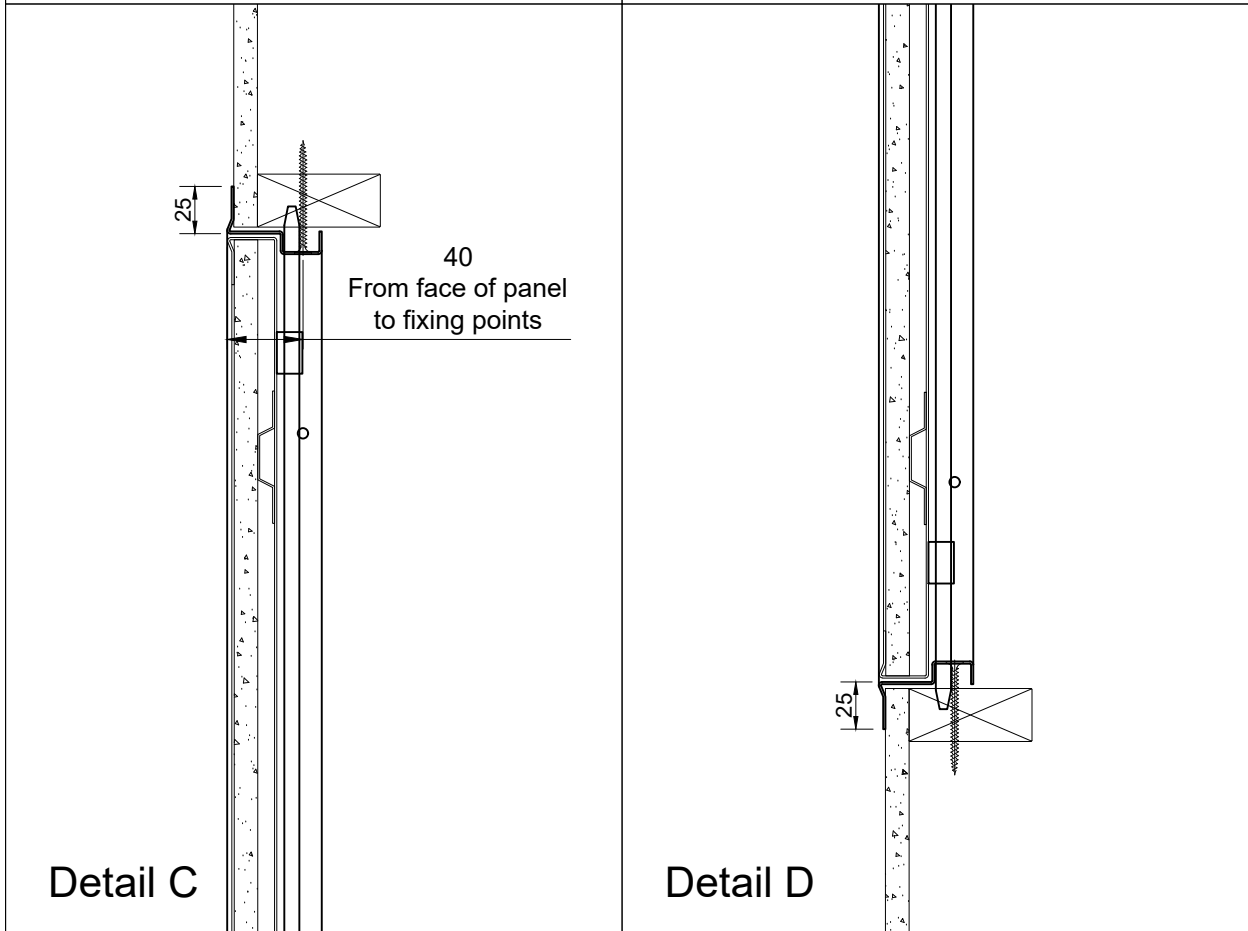
ACOUSTIC RATING N/A

Results declared reflect the optimum achievable within the limitations of the test standard and sites specific average results may vary where building elements of different materials interface altering natural acoustic deflection.



Detail A

Detail B



Detail C

Detail D

ACCESS PANEL SUITABLE FOR DOORS 200-800mm WIDE AND 300-1500mm HIGH. STUD WORK AND PLASTERBOARD SHOWN FOR REFERENCE ONLY.

FOR FURTHER TECHNICAL DETAIL AND INFORMATION PLEASE CONTACT THE SALES TEAM AT [sales@selo-uk.com](mailto:sales@selo-uk.com)

Remove all burrs and sharp edges.				PROJECT:		VIA ACCESS PANELS	
Please report errors and omissions				INT DWG NO:		SEL-DRW-PRD-VIA-0503	
FACE:		Plasterboard		EXT DWG NO:		SEL-DRW-PRD-VIA-2519	
		NAME	DATE	PANEL TYPE:		11 C	
B	Dimensions Updated	CK	16/01/25	DRAWN:	CK	28/07/23	
A	Initial issue	CK	28/07/23	CHECKED:			
REV:	COMMENT:	REVISED BY:	DATE:	APPROVED:			
				DESCRIPTION:		VIA Plasterboard NFR Single Door for Ceilings - Concealed, 3 Way Lock	
				SCALE:		1:10 / 4 @ A3 SHEET: 1 OF 1	
						TOLERANCES IN mm UNLESS OTHERWISE NOTED	
						X ± 1	
						X.X ± 0.5	
						ANGULAR ± 0.5 DEG	
						DO NOT SCALE PRINT	
						MILLIMETERS	
						REV. B	