

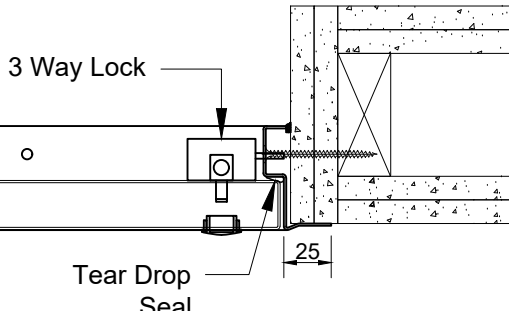
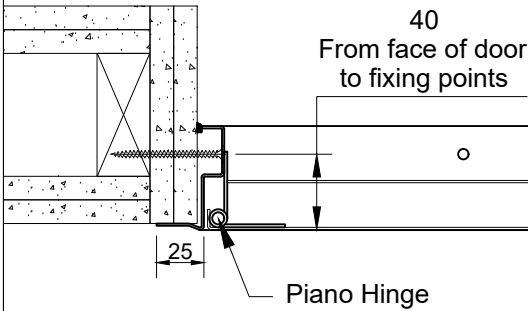
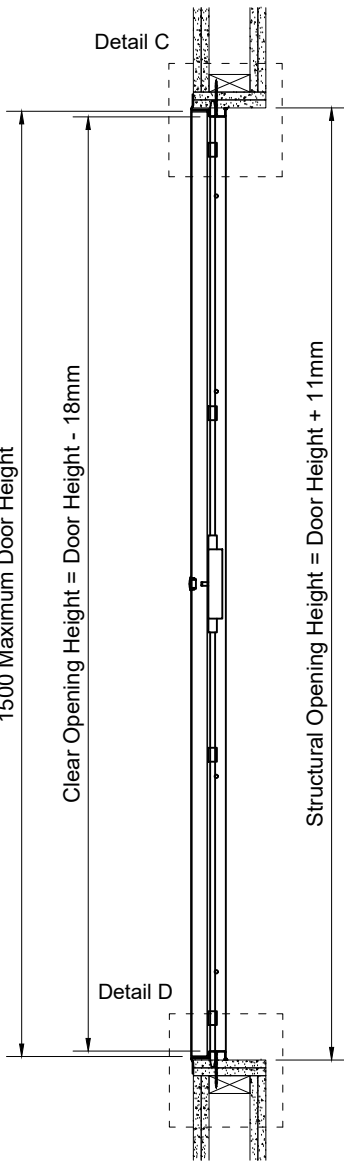
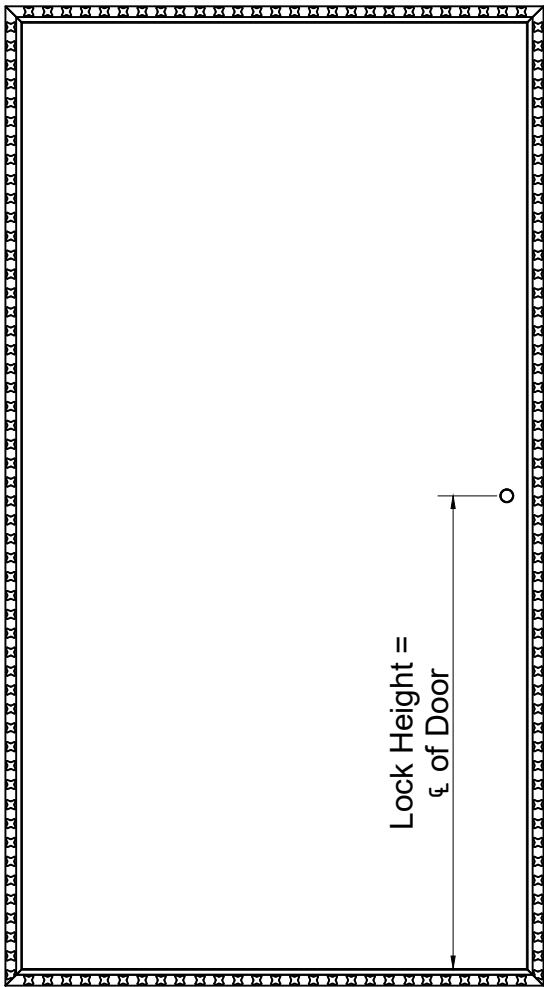
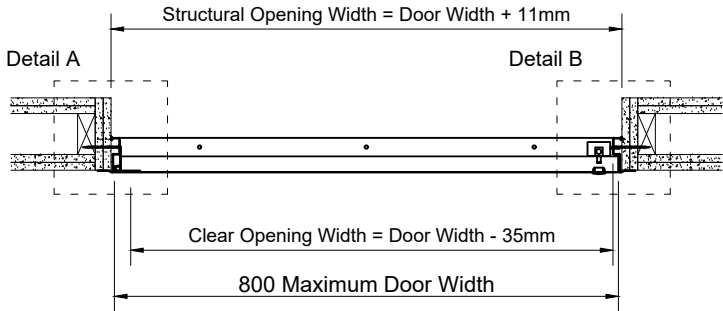
SEL-FRM-00098 Rev 1

Wall details shown for information only, not for construction issue

Please note:
Wall build up to be certified by others.

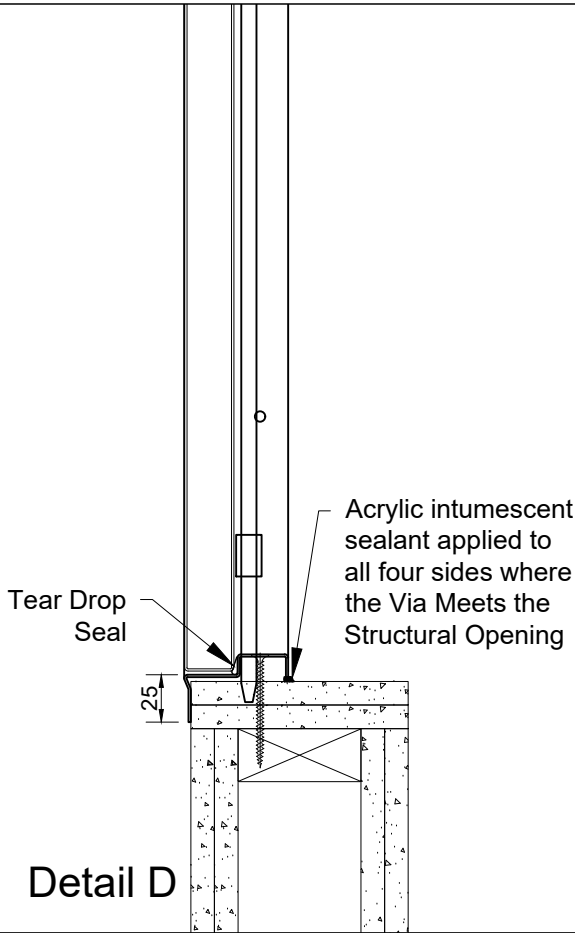
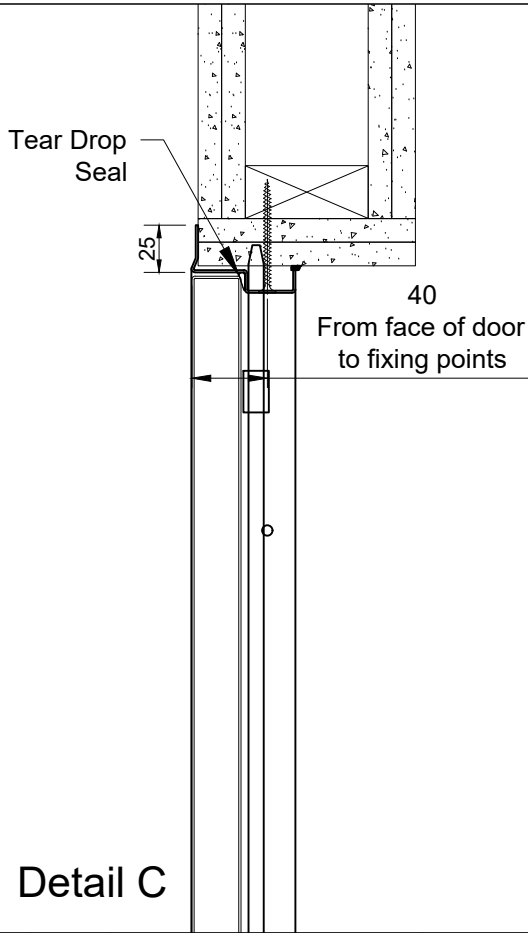
FIRE RATING	E120
FIRE STOPPING	Acrylic Intumescent Sealant
ACOUSTIC RATING	N/A
Results declared reflect the optimum achievable within the limitations of the test standard and sites specific average results may vary where building elements of different materials interface altering natural acoustic deflection.	

Door available within the following sizes:
200 to 800mm Wide & 300 to 1500mm high.



Detail A

Detail B



Detail C

Detail D

Selo are not the designers responsible for any wall detail if shown, you should know that we are not aware of any fire test evidence for wall constructions which are not, standard as defined in EN1363-1:2020, nor is it our responsibility to establish if such evidence exists.
Tested detail in accordance with EN1634-1, requires standard supporting wall constructions with a minimum of 200mm either side and above panel frame. Flexible wall construction requirement is a minimum of 300mm between apertures. Minimum upstand in flexible standard wall construction 100mm. Outside of these minimum dimensions specific fire test evidence should be sought.
All requirements of the Fire resistance field of application report from Warringtonfire, for the Selo product/s included in this drawing must be ensured, or an alternative fire assessment for any deviation including non-standard wall details must be sought from a competent and designated body for producing fire resistance assessments.

FOR FURTHER TECHNICAL DETAIL AND INFORMATION PLEASE
CONTACT THE SALES TEAM AT sales@selo-uk.com

		Remove all burrs and sharp edges.		PROJECT:		VIA ACCESS PANELS	
		Please report errors and omissions		INT DWG NO:		SEL-DRW-PRD-VIA-0241	
		FACE: Metal		EXT DWG NO:		SEL-DRW-PRD-VIA-2510	
C	Dimensions Updated	CK	16/01/25	NAME	DATE	PANEL TYPE:	6 W
B	Fire rated wall caveat added.	CK	03/08/23	DRAWN:	CK	28/07/23	DESCRIPTION:
A	Initial issue	CK	28/07/23	CHECKED:			VIA Metal E120 Single Door for Walls
REV:	COMMENT:	REVISED BY:	DATE:	APPROVED:			- Concealed, 3 Way Lock
						SCALE:	1:12 / 4 @ A3 SHEET: 1 OF 4
						TOLERANCES IN mm UNLESS OTHERWISE NOTED	
						X ± 1	
						X.X ± 0.5	
						ANGULAR ± 0.5 DEG	
						DO NOT SCALE PRINT	
						MILLIMETERS REV. C	

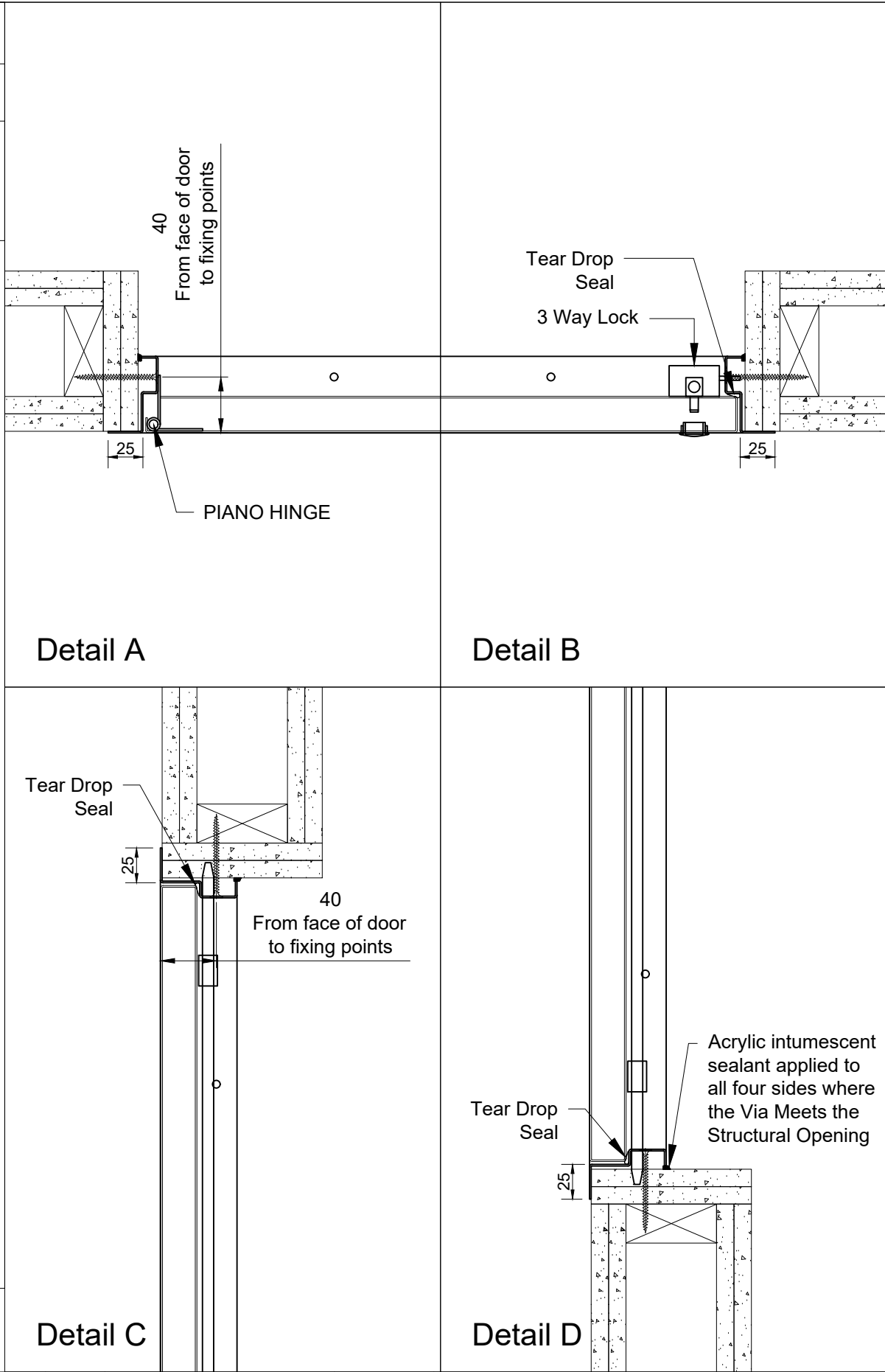
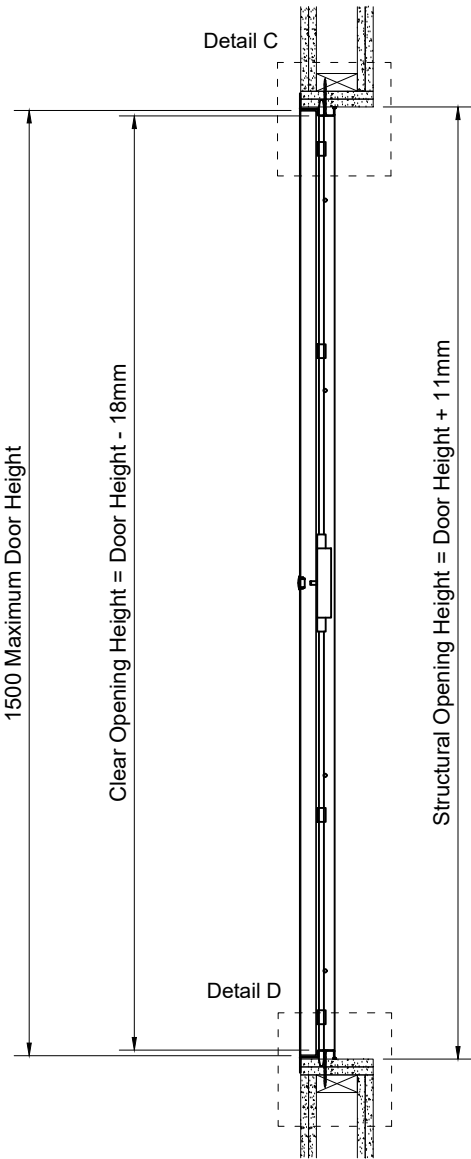
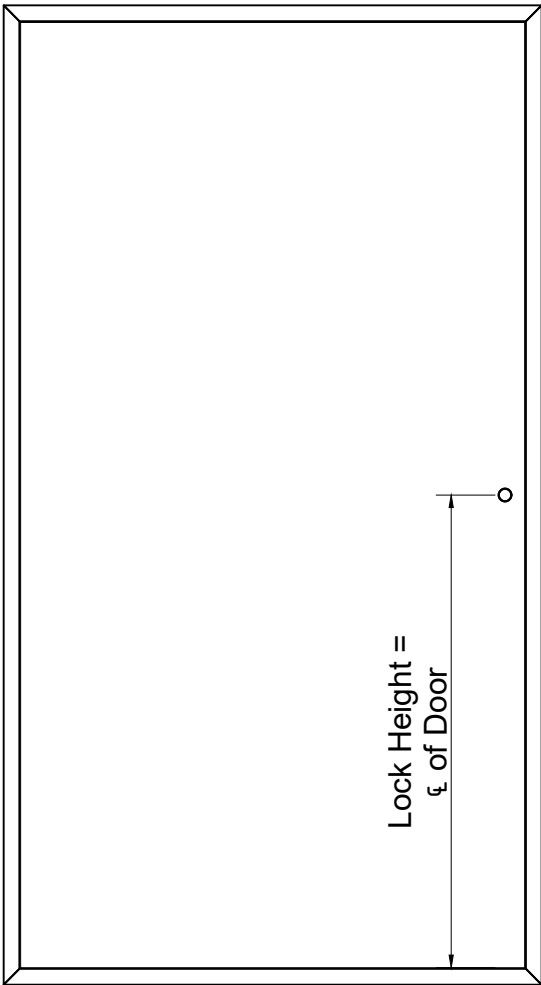
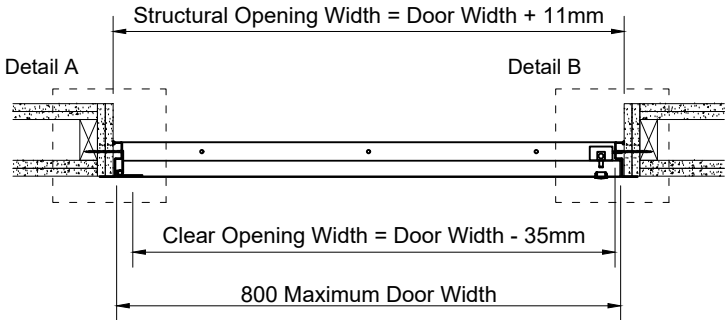
SEL-FRM-00098 Rev 1

Wall details shown for information only, not for construction issue

Please note:
Wall build up to be certified by others.

FIRE RATING	E120
FIRE STOPPING	Acrylic Intumescent Sealant
ACOUSTIC RATING	N/A
Results declared reflect the optimum achievable within the limitations of the test standard and sites specific average results may vary where building elements of different materials interface altering natural acoustic deflection.	

Door available within the following sizes:
200 to 800mm Wide & 300 to 1500mm high.




Selo are not the designers responsible for any wall detail if shown, you should know that we are not aware of any fire test evidence for wall constructions which are not, standard as defined in EN1363-1:2020, nor is it our responsibility to establish if such evidence exists.

Tested detail in accordance with EN1634-1, requires standard supporting wall constructions with a minimum of 200mm either side and above panel frame. Flexible wall construction requirement is a minimum of 300mm between apertures. Minimum upstand in flexible standard wall construction 100mm. Outside of these minimum dimensions specific fire test evidence should be sought.

All requirements of the Fire resistance field of application report from Warringtonfire, for the Selo product/s included in this drawing must be ensured, or an alternative fire assessment for any deviation including non-standard wall details must be sought from a competent and designated body for producing fire resistance assessments.

FOR FURTHER TECHNICAL DETAIL AND INFORMATION PLEASE
CONTACT THE SALES TEAM AT sales@selo-uk.com

				Remove all burrs and sharp edges.			PROJECT:	VIA ACCESS PANELS		TOLERANCES IN mm UNLESS OTHERWISE NOTED X ±1 X.X ±0.5 ANGULAR ±0.5 DEG
				Please report errors and omissions			INT DWG NO:	SEL-DRW-PRD-VIA-0242		
				FACE:	Metal		EXT DWG NO:	SEL-DRW-PRD-VIA-2510		
C	Dimensions Updated	CK	16/01/25		NAME	DATE	PANEL TYPE:	6 W		DO NOT SCALE PRINT MILLIMETERS REV. C
B	Fire rated wall caveat added.	CK	03/08/23	DRAWN:	CK	28/07/23	DESCRIPTION:	VIA Metal E120 Single Door for Walls - Visible, 3 Way Lock		
A	Initial issue	CK	28/07/23	CHECKED:						
REV:	COMMENT:	REVISED BY:	DATE:	APPROVED:				SCALE:	1:12 / 4 @ A3	SHEET: 2 OF 4

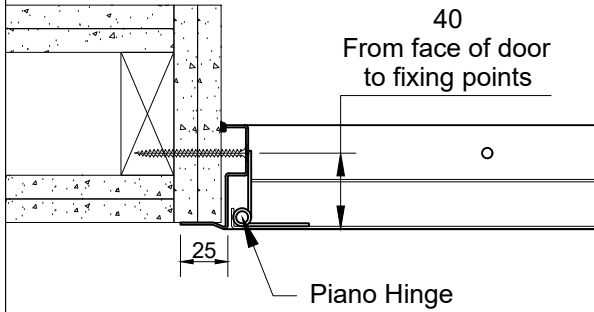
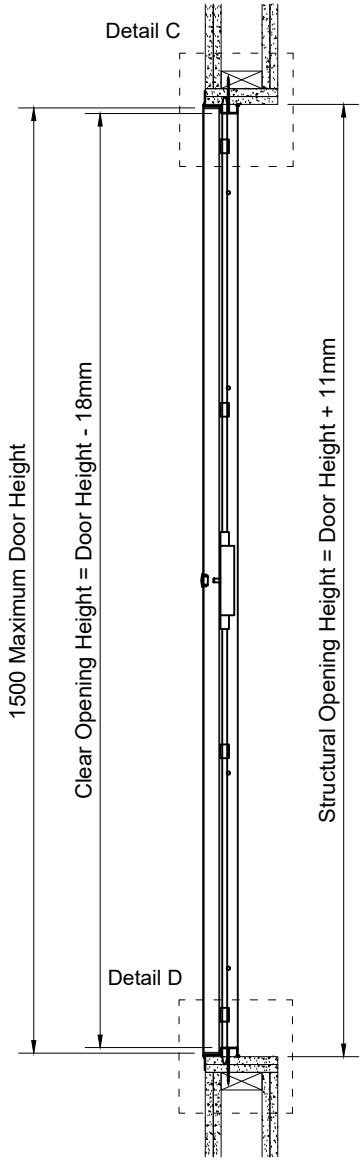
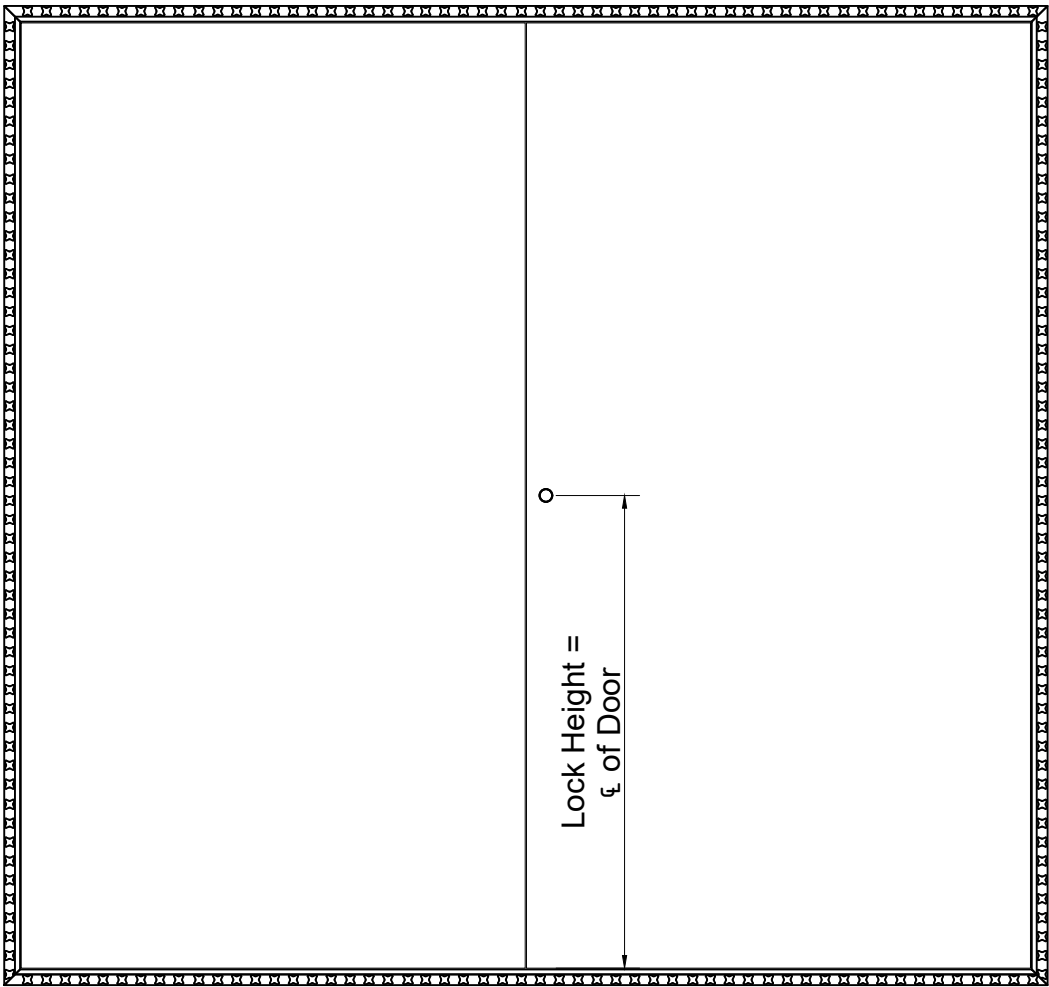
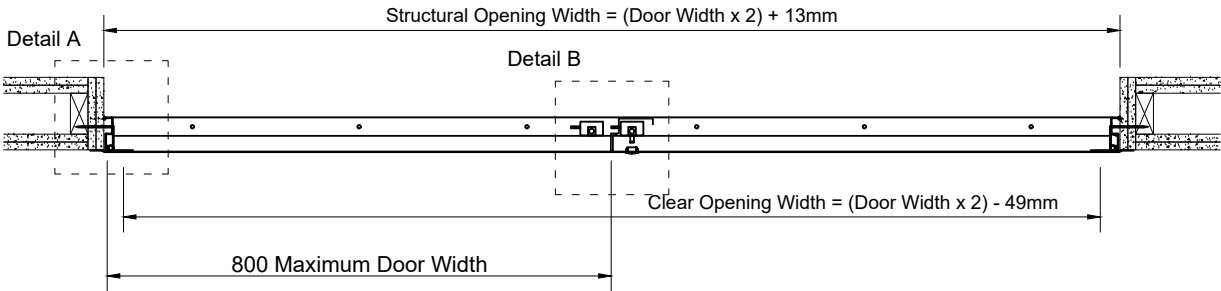
SEL-FRM-00098 Rev 1

Wall details shown for information only, not for construction issue

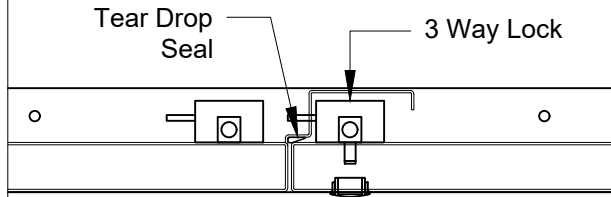
Please note:
Wall build up to be certified by others.

FIRE RATING	E120
FIRE STOPPING	Acrylic Intumescent Sealant
ACOUSTIC RATING	N/A
Results declared reflect the optimum achievable within the limitations of the test standard and sites specific average results may vary where building elements of different materials interface altering natural acoustic deflection.	

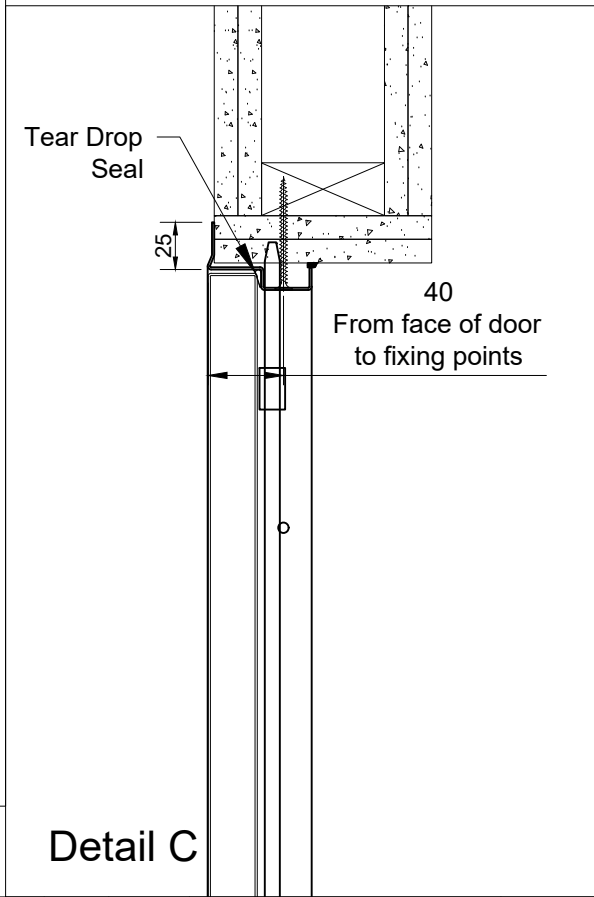
Door available within the following sizes:
200 to 800mm Wide & 300 to 1500mm high.



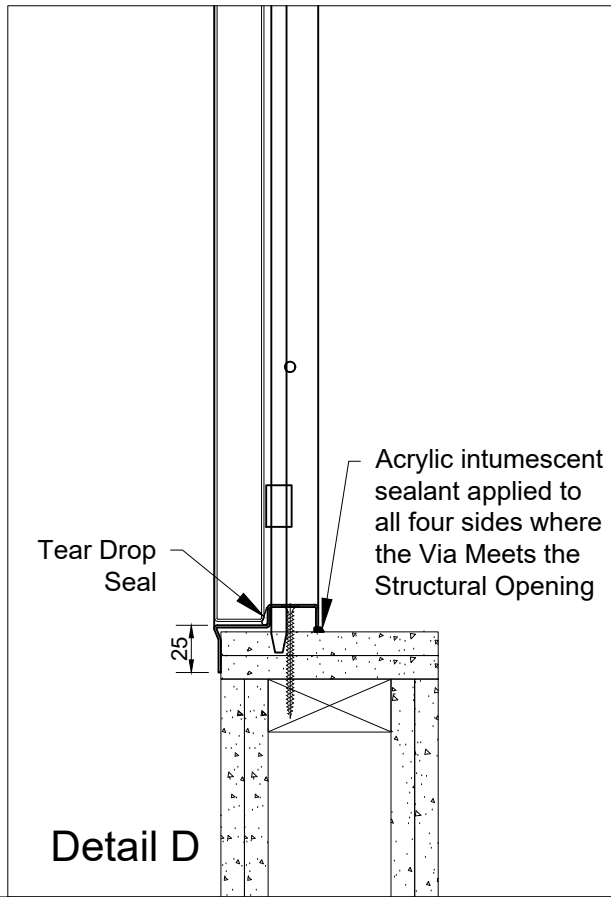
Detail A



Detail B



Detail C



Detail D

Selo are not the designers responsible for any supporting construction if shown, you should know that we are not aware of any fire test evidence for supporting constructions which are not, standard as defined in EN1363-1:2020, nor is it our responsibility to establish if such evidence exists. Tested detail in accordance with EN1634-1, requires standard supporting constructions with a minimum of 200mm around the panel frame. Flexible construction requirement is a minimum of 300mm between apertures. Outside of these minimum dimensions specific fire test evidence should be sought. All requirements of the Fire resistance field of application report from Warringtonfire, for the Selo product/s included in this drawing must be ensured, or an alternative fire assessment for any deviation including non-standard construction details must be sought from a competent and designated body for producing fire resistance assessments.

FOR FURTHER TECHNICAL DETAIL AND INFORMATION PLEASE
CONTACT THE SALES TEAM AT sales@selo-uk.com

Remove all burrs and sharp edges.				PROJECT:	VIA ACCESS PANELS	TOLERANCES IN mm UNLESS OTHERWISE NOTED X ± 1 X.X ± 0.5 ANGULAR ± 0.5 DEG
Please report errors and omissions				INT DWG NO:	SEL-DRW-PRD-VIA-0261	
FACE:		Metal		EXT DWG NO:	SEL-DRW-PRD-VIA-2510	
DRAWN:		NAME	DATE	PANEL TYPE:	6 C	
REV:		COMMENT:	REVISD BY:	DATE:	DESCRIPTION:	DO NOT SCALE PRINT MILLIMETERS REV. C
C		Initial issue	CK	17/01/25	CHECKED:	
					APPROVED:	
				SCALE: 1:12 / 4 @ A3		SHEET: 3 OF 4

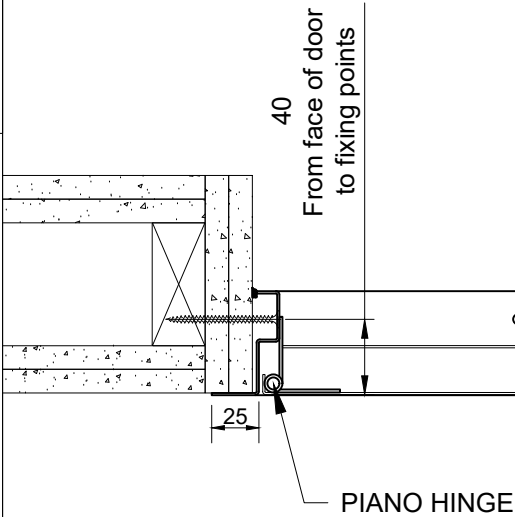
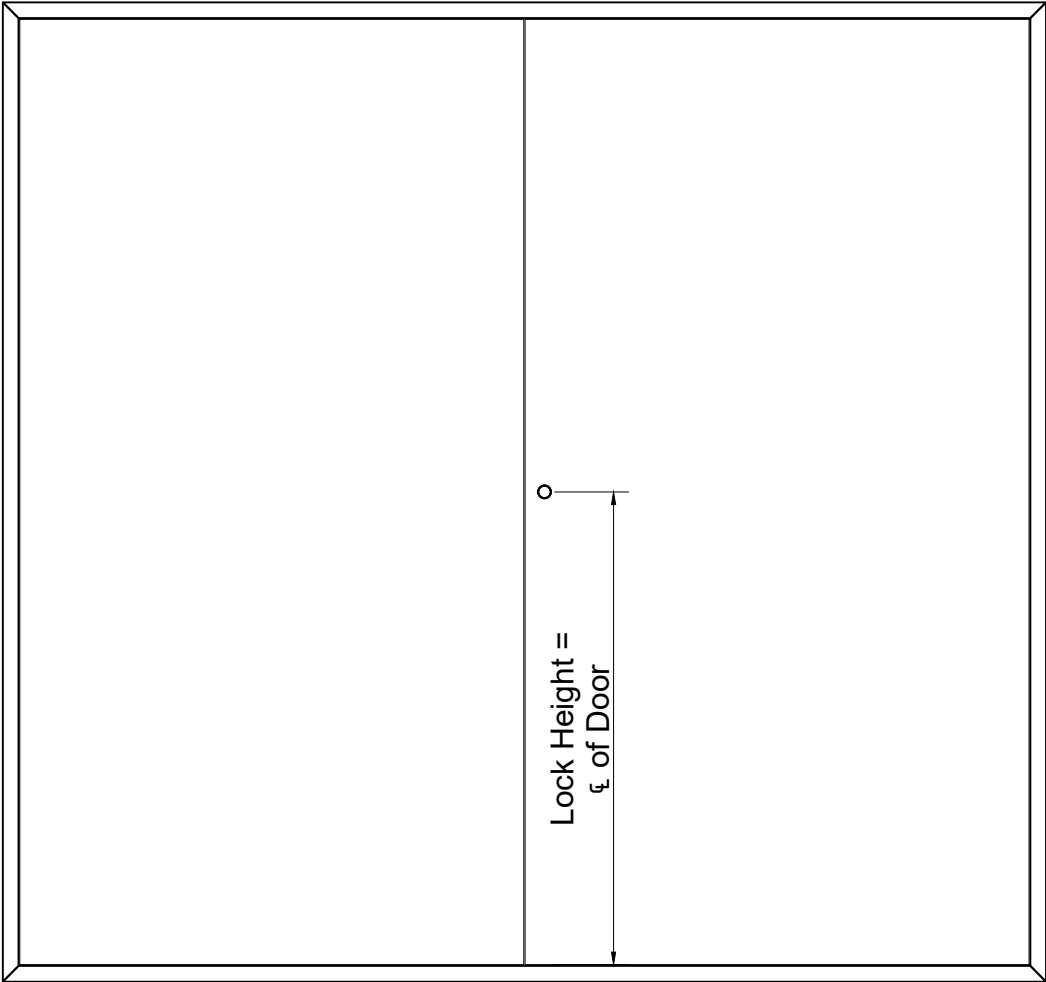
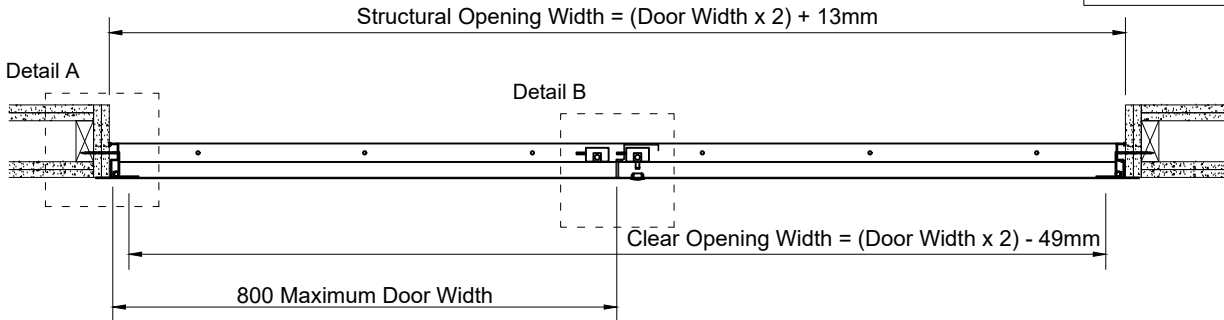
SEL-FRM-00098 Rev 1

Wall details shown for information only, not for construction issue

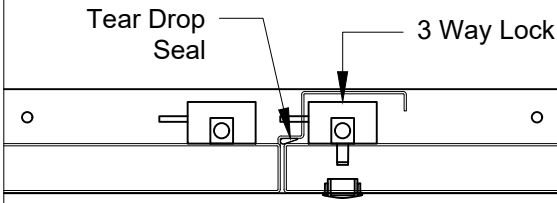
Please note:
Wall build up to be certified by others.

FIRE RATING	E120
FIRE STOPPING	Acrylic Intumescent Sealant
ACOUSTIC RATING	N/A
Results declared reflect the optimum achievable within the limitations of the test standard and sites specific average results may vary where building elements of different materials interface altering natural acoustic deflection.	

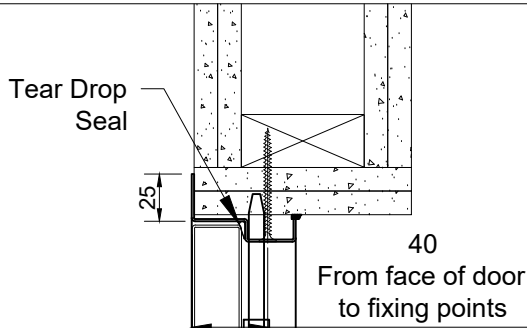
Door available within the following sizes:
200 to 800mm Wide & 300 to 1500mm high.



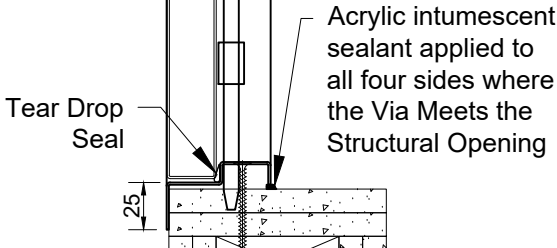
Detail A



Detail B




Detail C



Detail D

Selo are not the designers responsible for any supporting construction if shown, you should know that we are not aware of any fire test evidence for supporting constructions which are not, standard as defined in EN1363-1:2020, nor is it our responsibility to establish if such evidence exists. Tested detail in accordance with EN1634-1, requires standard supporting constructions with a minimum of 200mm around the panel frame. Flexible construction requirement is a minimum of 300mm between apertures. Outside of these minimum dimensions specific fire test evidence should be sought. All requirements of the Fire resistance field of application report from Warringtonfire, for the Selo product/s included in this drawing must be ensured, or an alternative fire assessment for any deviation including non-standard construction details must be sought from a competent and designated body for producing fire resistance assessments.

FOR FURTHER TECHNICAL DETAIL AND INFORMATION PLEASE
CONTACT THE SALES TEAM AT sales@selo-uk.com

				Remove all burrs and sharp edges.		PROJECT:	VIA ACCESS PANELS			
				Please report errors and omissions		INT DWG NO:	SEL-DRW-PRD-VIA-0262		TOLERANCES IN mm UNLESS OTHERWISE NOTED	
				FACE:	Metal		EXT DWG NO:	SEL-DRW-PRD-VIA-2510	X ± 1 X.X ± 0.5 ANGULAR ± 0.5 DEG	
					NAME	DATE	PANEL TYPE:	6 C		
				DRAWN:	CK	17/01/25	DESCRIPTION:	VIA Metal E120 Double Door for Walls - Visible, 3 Way Lock	DO NOT SCALE PRINT	
C	Initial issue	CK	17/01/25	CHECKED:					MILLIMETERS	
REV:	COMMENT:	REVISED BY:	DATE:	APPROVED:				SCALE: 1:12 / 4 @ A3	SHEET: 4 OF 4	REV. C