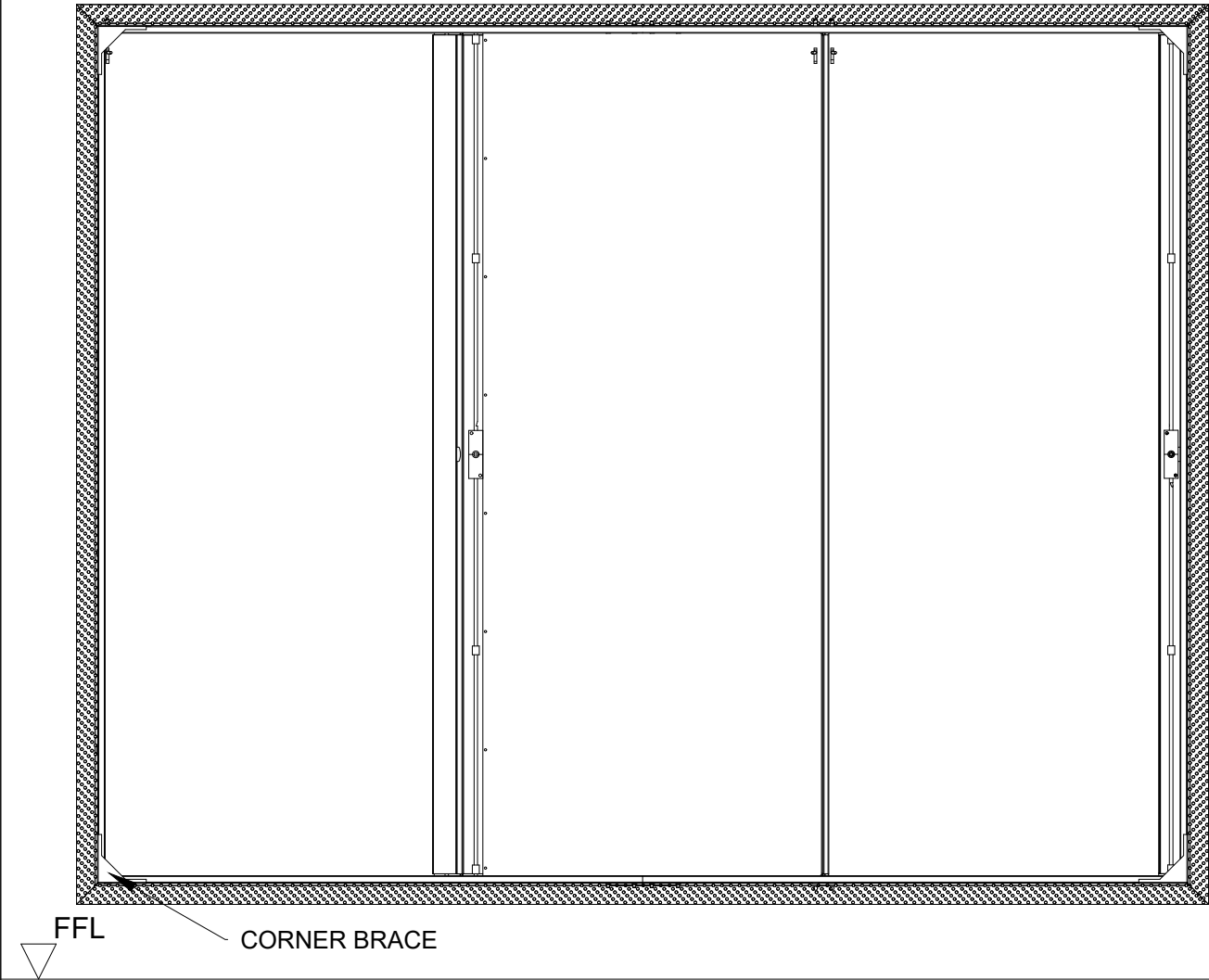
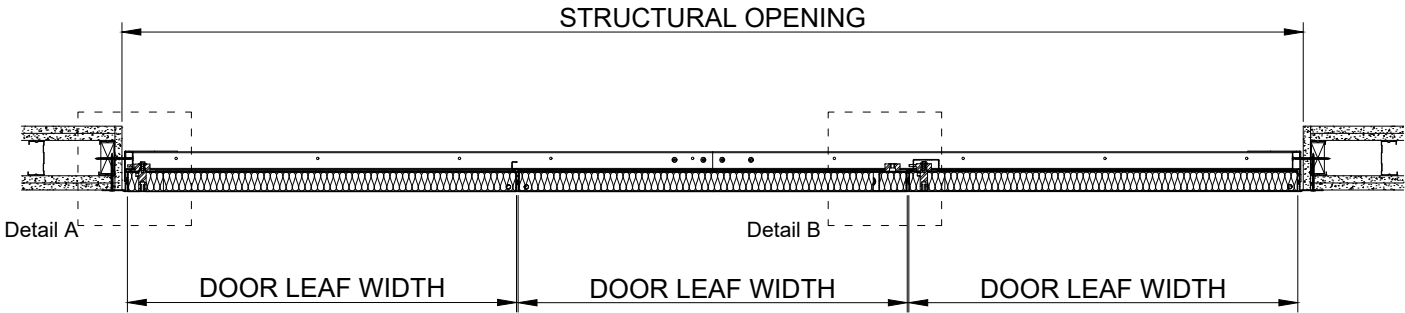


FIRE RATING	E120 E120Sa
FIRE STOPPING	INTUMESCENT ACRYLIC SEALANT or QUENCH FIRE-STOPPING
ACOUSTIC RATING	Up To 41dB
Results declared reflect the optimum achievable within the limitations of the test standard and sites specific average results may vary where building elements of different materials interface altering natural acoustic deflection.	

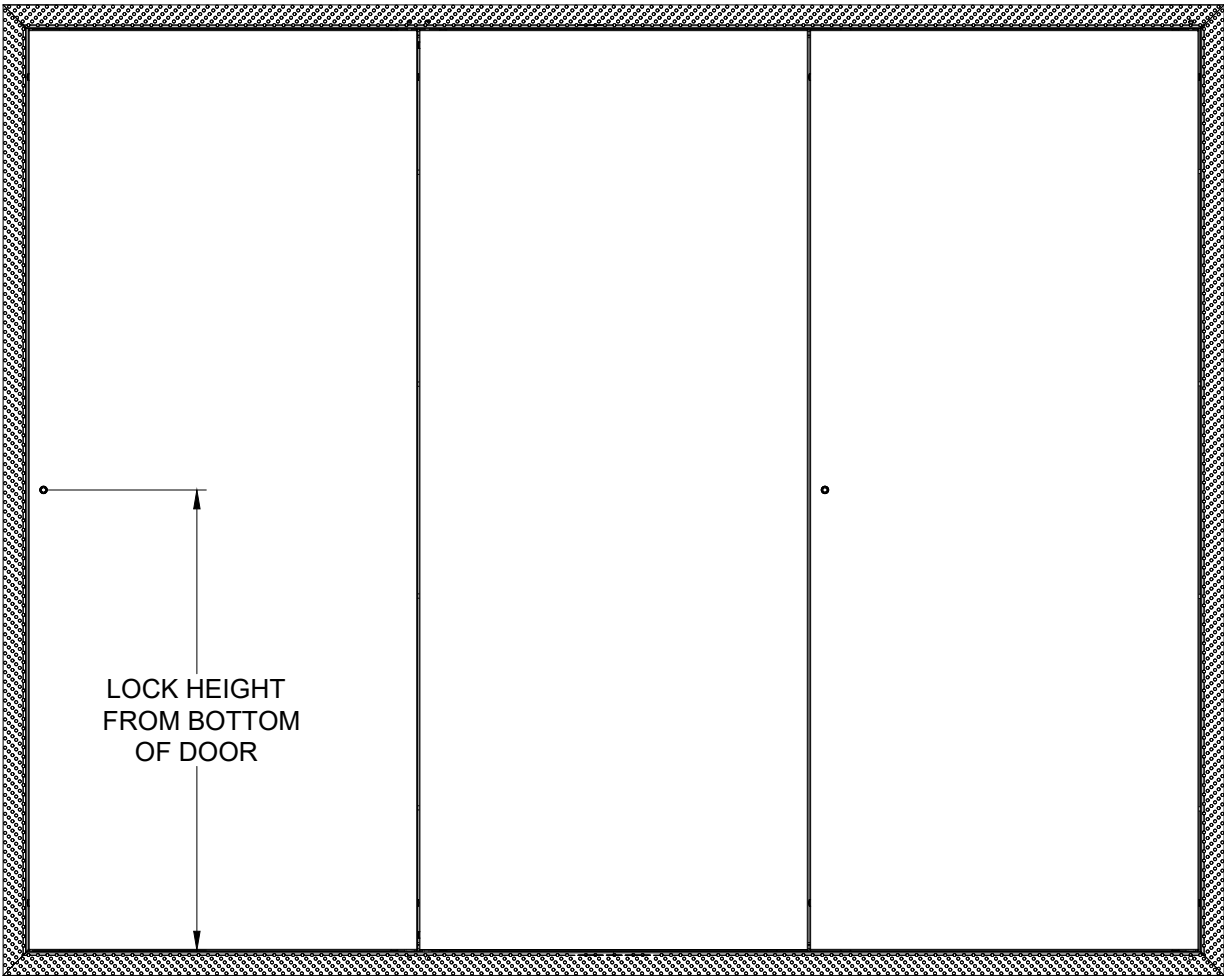
Drawing For Information Only  
NOT FOR CONSTRUCTION

ABOVE TO BE SPECIFIED AS REQUIRED

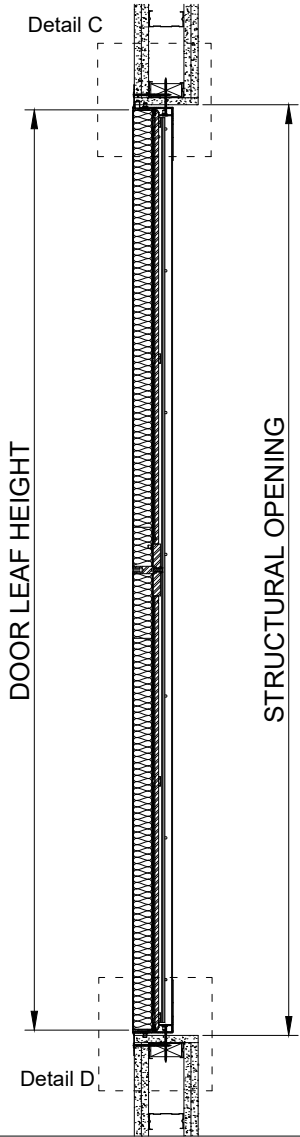
Please note:  
Wall build up to be certified by others.



REAR VIEW


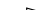


FRONT VIEW



Selo are not the designers responsible for any wall detail if shown, you should know that we are not aware of any fire test evidence for wall constructions which are not, standard as defined in EN1363-1:2020, nor is it our responsibility to establish if such evidence exists.  
Tested detail in accordance with EN1634-1, requires standard supporting wall constructions with a minimum of 200mm either side and above door frame. Flexible wall construction requirement is a minimum of 300mm between apertures. Minimum upstand in flexible standard wall construction 100mm. Outside of these minimum dimensions specific fire test evidence should be sought.  
All requirements of the Fire resistance field of application report from Warringtonfire, for the Selo product/s included in this drawing must be ensured, or an alternative fire assessment for any deviation including non-standard wall details must be sought from a competent and designated body for producing fire resistance assessments.

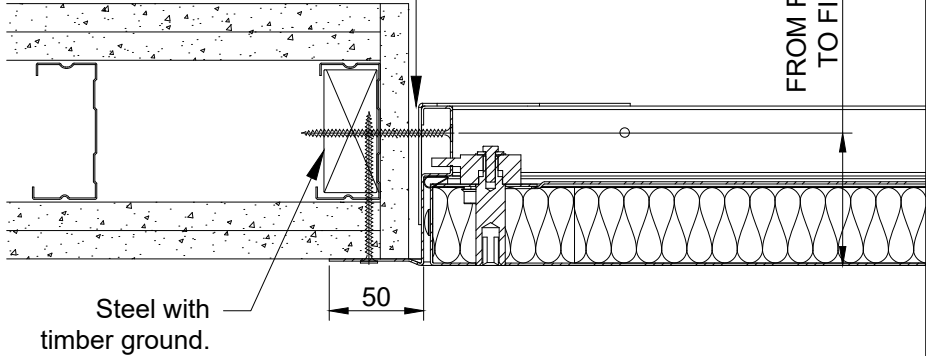
FOR FURTHER TECHNICAL DETAIL AND INFORMATION PLEASE  
CONTACT THE SALES TEAM AT sales@selo-uk.com

Remove all burrs and sharp edges.		Please report errors and omissions		DO NOT SCALE PRINT		FINISH: N/A		COLOUR: N/A	
DISCLAIMER:		MATERIAL: N/A		PROJECT: QUADRA					
Drawing is provided to customers free of charge and the details shown are subject to the accuracy of the information provided to SELO at the time the drawing was originally requested. No duty of care is owed to the recipient or any other third party and SELO cannot accept liability in respect to the details shown. The drawing should therefore be approved by the project design and management authority before use to ensure it meets with their specific requirements. It should also be read in conjunction with SELO's current literature available at <a href="http://www.selo-uk.com">www.selo-uk.com</a>			NAME	DATE	DRAWING NUMBER: SEL-DRW-PRD-QUAD-0006		TOLERANCES IN mm UNLESS OTHERWISE NOTED		
		DRAWN	NB	23/03/21	TYPE: RISER SYSTEM CONCEALED FRAME				
		CHECKED			PART DESCRIPTION: THREE DOOR - L3D RHA		X ± 1		
		APPROVED				SCALE: N/A	SHEET 1 OF 2	X.X ±0.5	
		REVISION	D					ANGULAR ±0.5 DEG	
						MILLIMETERS			

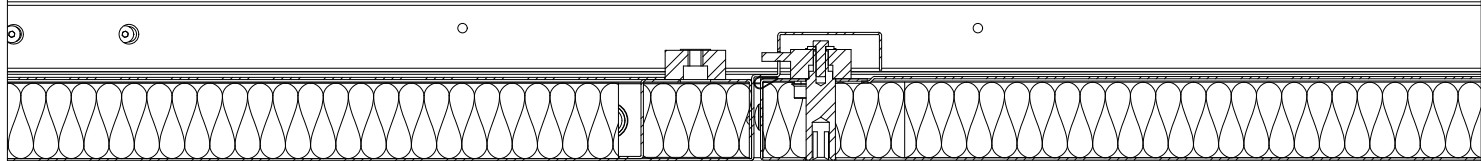
FIRE RATING	E120 E120Sa
FIRE STOPPING	INTUMESCENT ACRYLIC SEALANT or QUENCH FIRE-STOPPING
ACOUSTIC RATING	Up To 41dB
Results declared reflect the optimum achievable within the limitations of the test standard and sites specific average results may vary where building elements of different materials interface altering natural acoustic deflection.	

ABOVE TO BE SPECIFIED AS REQUIRED

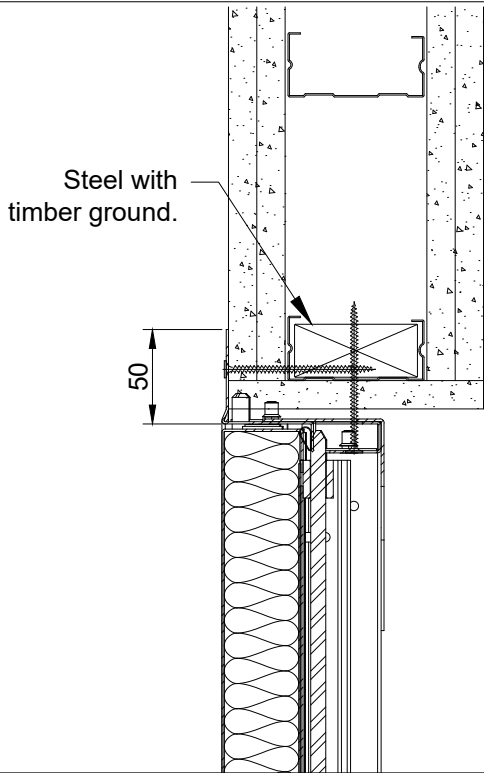
Please note:  
Wall build up to be certified by others.



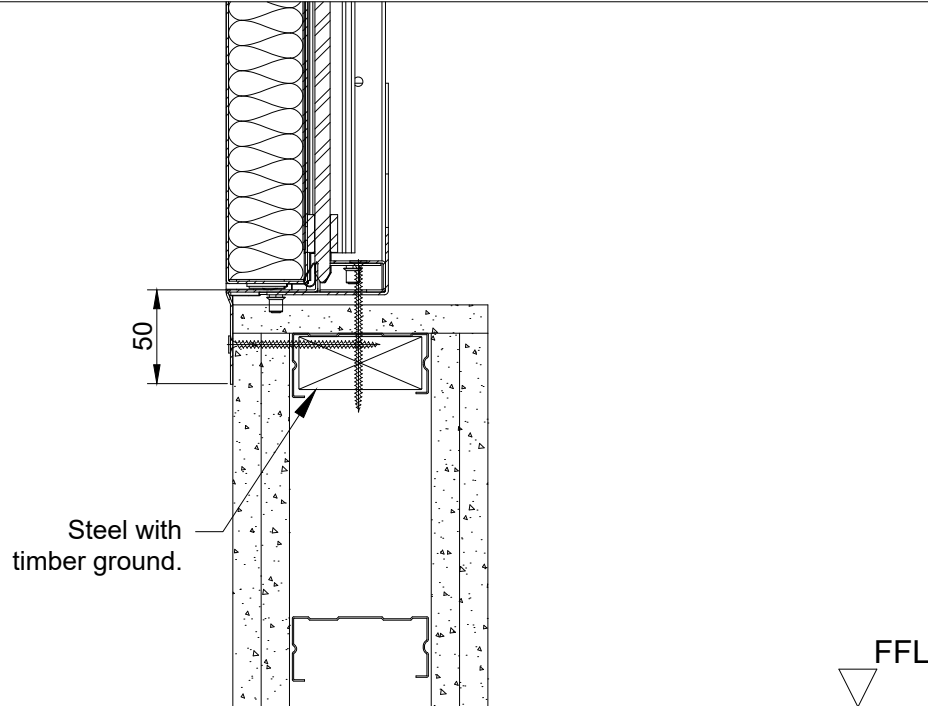
Detail A



Detail B




Detail C



Detail D

Selo are not the designers responsible for any wall detail if shown, you should know that we are not aware of any fire test evidence for wall constructions which are not, standard as defined in EN1363-1:2020, nor is it our responsibility to establish if such evidence exists.  
Tested detail in accordance with EN1634-1, requires standard supporting wall constructions with a minimum of 200mm either side and above door frame. Flexible wall construction requirement is a minimum of 300mm between apertures. Minimum upstand in flexible standard wall construction 100mm. Outside of these minimum dimensions specific fire test evidence should be sought.  
All requirements of the Fire resistance field of application report from Warringtonfire, for the Selo product/s included in this drawing must be ensured, or an alternative fire assessment for any deviation including non-standard wall details must be sought from a competent and designated body for producing fire resistance assessments.

FOR FURTHER TECHNICAL DETAIL AND INFORMATION PLEASE  
CONTACT THE SALES TEAM AT [sales@selo-uk.com](mailto:sales@selo-uk.com)

Remove all burrs and sharp edges.		Please report errors and omissions		DO NOT SCALE PRINT		FINISH: N/A		COLOUR: N/A		
DISCLAIMER:			MATERIAL: N/A		PROJECT: QUADRA		TOLERANCES IN mm UNLESS OTHERWISE NOTED			
Drawing is provided to customers free of charge and the details shown are subject to the accuracy of the information provided to SELO at the time the drawing was originally requested. No duty of care is owed to the recipient or ant other third party and SELO cannot accept liability in respect to the details shown. The drawing should therefore be approved by the project design and management authority before use to ensure it meets with their specific requirements. It should also be read in conjunction with SELO's current literature available at <a href="http://www.selo-uk.com">www.selo-uk.com</a>			NAME		DATE					DRAWING NUMBER: SEL-DRW-PRD-QUAD-0006
			DRAWN		NB		23/03/21		TYPE: RISER SYSTEM CONCEALED FRAME	
			CHECKED						PART DESCRIPTION: THREE DOOR - L3D RHA	
			APPROVED							
			REVISION		D				SCALE: N/A	
							MILLIMETERS		